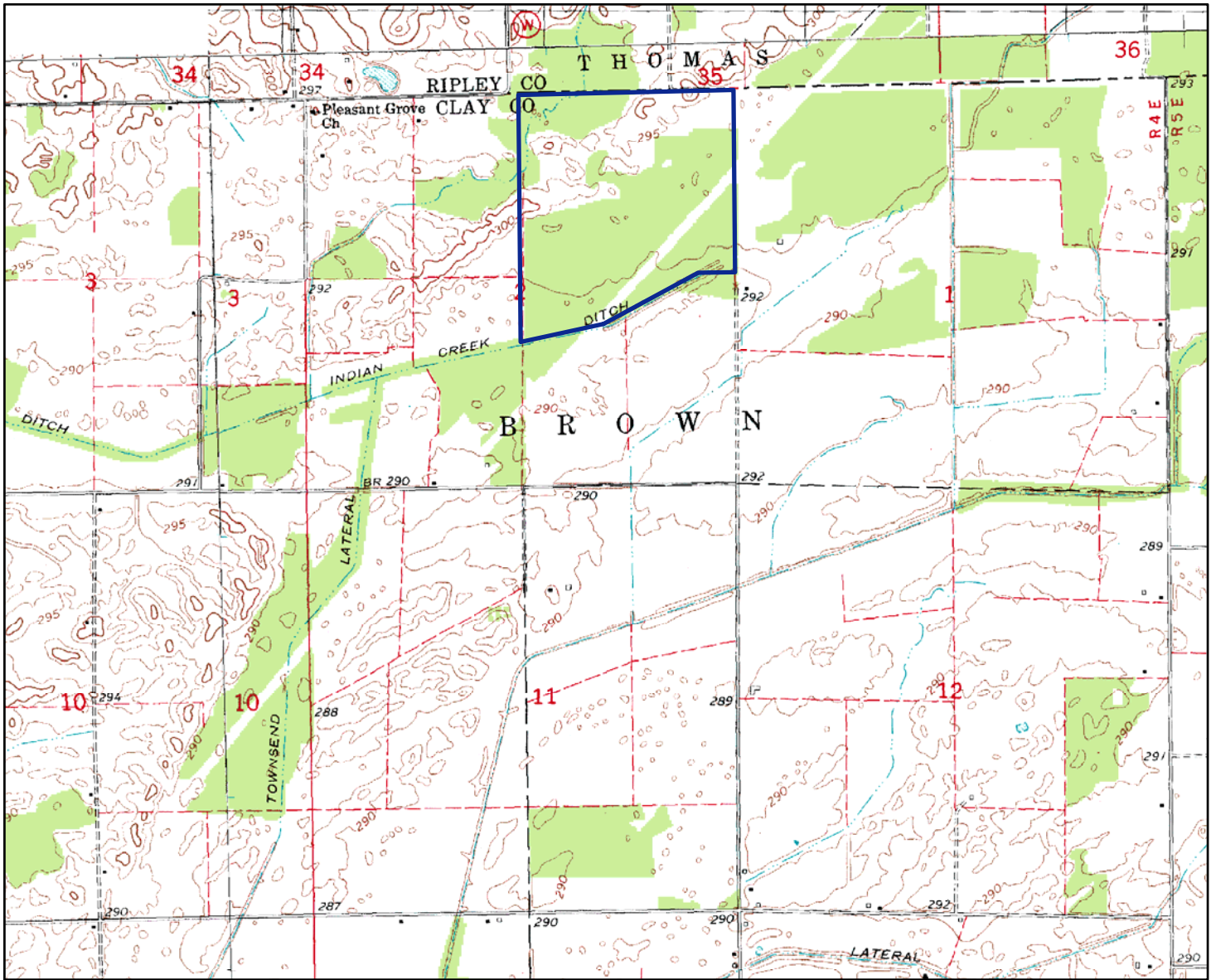


Arkansas Natural Heritage Commission
Department of Arkansas Heritage
System of Natural Areas
Approximate Natural Area Boundaries



Staline Sand Ponds Natural Area

County: Clay Date Added To System: 1994 Acreage: 166.53

USGS Topographic Quadrangle: Corning 7.5'
Township/Range: T21N R4E Section(s): 2 Contour Interval: 5 feet

Directions: From the center of Corning take U.S. Highway 67 north approximately 2.8 miles to its junction with State Highway 328, turn left (west) onto State Highway 328. Go 1 mile, turn right (north) on County Road 143; go 2.5 miles north.

